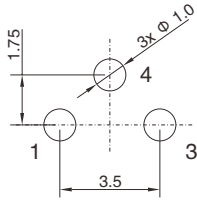


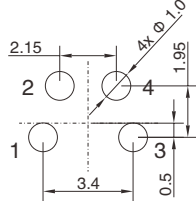
M8 PCB Layout & Panel Cut-out

PCB Layout

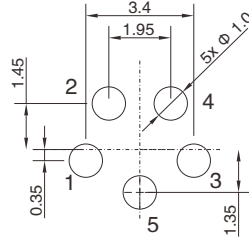
M8 Male Connector



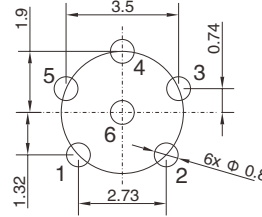
3P (Pin OD: Φ 0.8)



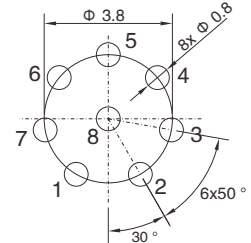
4P (Pin OD: Φ 0.8)



5P (Pin OD: Φ 0.8)



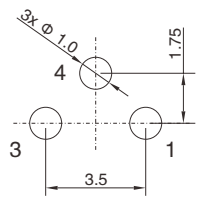
6P (Pin OD: Φ 0.6)



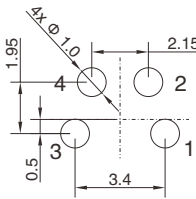
8P (Pin OD: Φ 0.6)

Recommended PCB layout

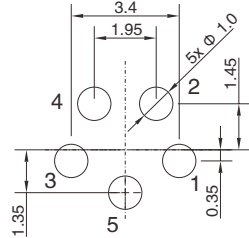
M8 Female Connector



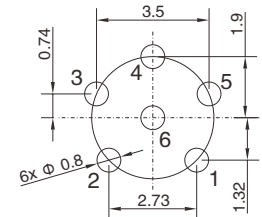
3P (Pin OD: Φ 0.8)



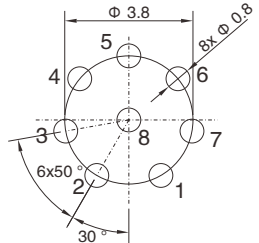
4P (Pin OD: Φ 0.8)



5P (Pin OD: Φ 0.8)



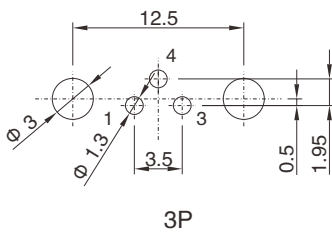
6P (Pin OD: Φ 0.6)



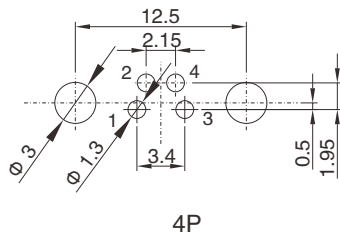
8P (Pin OD: Φ 0.6)

Recommended PCB layout

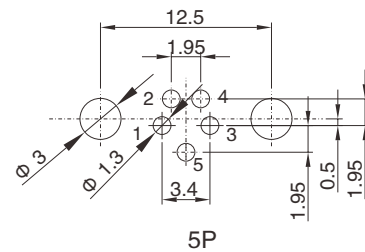
M8 Male Right Angled Connector



3P



4P



5P

Recommended PCB layout